

**I-64 Peninsula Widening- Segment I**

**Project Scope:**

From 0.52 miles east of Yorktown Road/Rte 238 (Exit 247) to 1.55 miles west of Jefferson Ave/Rte 143 (Exit 255) (6.1 miles)

- Additional 12' wide travel lanes and 12' wide shoulders within the existing median space
- Replacement of the Industrial Park Drive bridges, and repair and widening of 4 bridges and 2 major culverts
- Strengthened shoulder lane from Ft Eustis Blvd Interchange to Jefferson Avenue Interchange

**Project Financial Summary:**

<u>Project Budget (\$112,000,000):</u>	<u>Funds Expended (as of 10/26/18):</u>	<u>Projected Cost Over/(Under):</u>
○ PE \$ 3,000,000	\$ 2,738,567	\$ 0
○ RW \$ 33,000	\$ 32,494	\$ 0
○ CN \$ 108,967,000	\$ <u>98,773,435</u>	\$ 0
	\$ 101,544,496	

**Project Schedule:**

Notice To Proceed (NTP)	March 2015
Project Completion	December 2017
Schedule Status	Completed

**Project Status:**

- Completion achieved on December 1, 2017



**Project Site (Looking West from Denbigh Blvd.)**

**I-64 Peninsula Widening- Segment II**

Project Scope:

From 1.05 miles west of Hummelsine Parkway/Marquis Center Pkwy/Rte 199 (Exit 242) to where the Segment I project ends at 0.54 miles east of Yorktown Road/Rte 238 (Exit 247) (7.1 miles)

- o Additional 12' wide travel lanes and 12' wide shoulders within the existing median space
- o Repair and widening of 9 bridges and 6 major culverts
- o Reconstruction of existing roadway

Project Financial Summary:

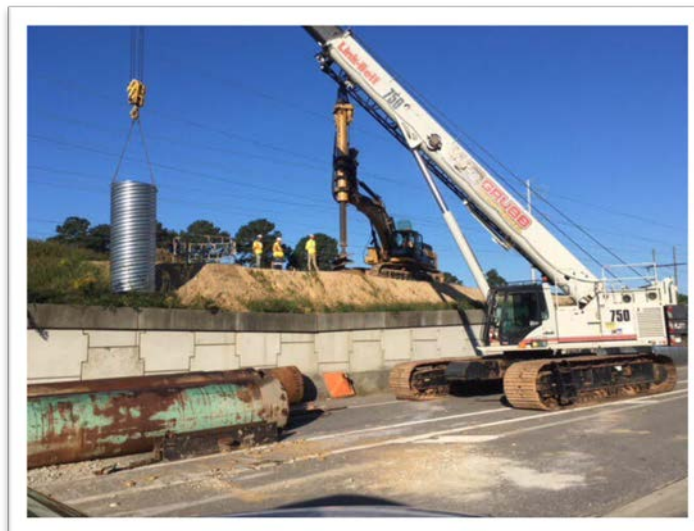
<u>Project Budget (\$175,832,897):</u>	<u>Funds Expended (as of 10/26/18):</u>	<u>Projected Cost Over/(Under):</u>
o PE \$ 6,000,000	\$ 2,587,419	\$ 0
o RW \$ 1,511,548	\$ 509,611	\$ 0
o CN \$ 168,321,349	<u>\$ 129,300,895</u>	\$ 0
	\$ 132,397,925	

Project Schedule:

Notice To Proceed	February 2016
Project Completion	May 2019
Schedule Status	On-Schedule

Project Status:

- o Continued Phase II pavement reconstruction throughout project Sections A through D
- o Continued with rehabilitation of existing bridge decks all bridges
- o I-64 WB traffic shift to Phase 2 in Section D (east of Exit 247) achieved on September 19, 2018. The entire project is now in the Phase II configuration
- o Installation of Noise Wall footings started on October 2, 2018



**I-64 eastbound installation of drilled shaft foundations for noise walls**

**I-64 Peninsula Widening- Segment III**

Project Scope:

From approximately 1.15 miles West of Rte 199/Lightfoot (Exit 234) to where the Segment II project ends at 1.05 miles west of Hummelsine Parkway/Marquis Center Pkwy /Rte 199 (Exit 242) (8.2 miles)

- o Additional 12' wide travel lanes and 12' wide shoulders within the existing median space
- o Replacement of the two Queen's Creek bridges, repair and widening of 4 bridges, 3 major culverts
- o Reconstruction of existing mainline roadway

Project Financial Summary:

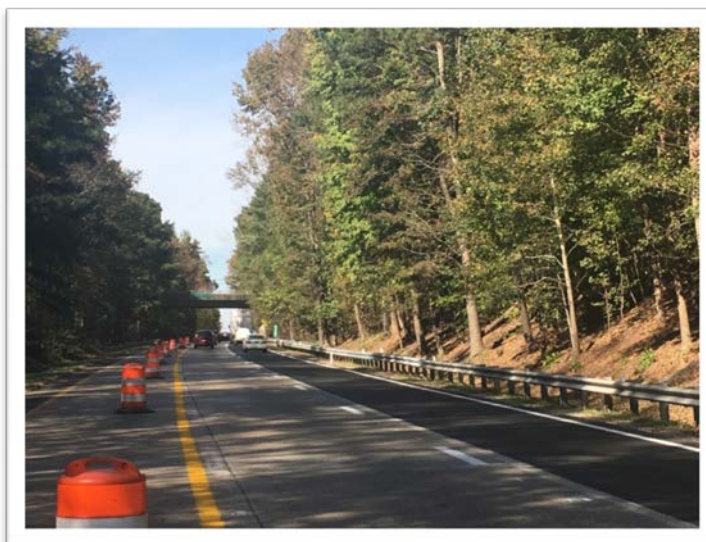
<u>Project Budget (\$244,045,973):</u>	<u>Funds Expended (as of 10/26/18):</u>	<u>Projected Cost Over/(Under):</u>
o PE \$ 10,000,000	\$ 4,655,529	\$ 0
o RW \$ 12,000,000	\$ 36,935	\$ 0
o CN \$ 222,045,973	<u>\$ 24,391,701</u>	\$ 0
	\$ 29,084,165	

Project Schedule:

Notice To Proceed	January 2018
Project Completion	September 2021 (or June 2021 for early completion incentive)
Schedule Status	On-Schedule

Project Status:

- o Outside shoulder strengthening began in August 2018 and nearly complete
- o Westbound traffic shift to the outside lanes began in late October 2018
- o 100% Roadway Design Plans are under review. Notice to Commence Construction is expected in late November 2018
- o Limited Access changes were approved at the October 2018 CTB meeting
- o The USACE Joint Permit is expected by late November 2018



**I-64 westbound traffic switch to strengthened outside shoulders**

**I-64/I-264- Phase I**

Project Scope:

From the I-64 Twin Bridges to the I-264/Newtown Road Interchange

- Widening westbound I-64 by adding a second exit lane from Twin Bridges to the I-64/I-264 interchange
- Introducing a new two lane Collector-Distributor (C-D) roadway from I-64 to the Newtown Road interchange
- Constructing a new two-lane flyover ramp from westbound I-64 tying into the existing eastbound I-264 C-D road

Project Financial Summary:

<u>Project Budget (\$158,730,023):</u>	<u>Funds Expended (as of 10/26/18):</u>	<u>Projected Cost Over/(Under):</u>
○ PE \$ 10,135,307	\$ 10,135,307	\$ 0
○ RW \$ 11,571,063	\$ 20,284,267	\$ 8,713,204
○ CN \$ 137,023,653	<u>\$ 80,276,472</u>	\$ 0
	\$110,696,046	

Project Schedule:

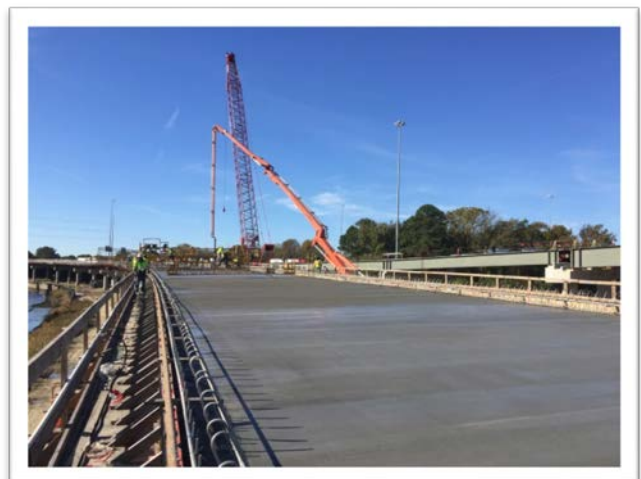
Notice To Proceed	October 2016
Project Completion	October 2019
Schedule Status	On-Schedule

Project Status:

- Placing bridge decks
- Completing Culvert at I-264 E Exit 15A
- Erecting overhead signs and sound barriers I-64 W
- Widening I-64 W between twin bridges and Curlew Avenue



**Widening I-64 W and Sound Barrier 2 (Sentara)**



**Bridge B-603 Deck Placement (toward B-602)**

**I-64/I-264- Phase II**

Project Scope:

From the I-264/Newtown Road Interchange to the I-264/Witchduck Road Interchange

- Extends the new C-D roadway from the Newtown Road interchange to the Witchduck Road interchange
- Reconfigure the Newtown Road and Witchduck Road interchange ramps south of I-264
- Constructing a new overpass that connects Greenwich Road south side of I-264 and Cleveland north of I-264

Project Financial Summary:

<u>Project Budget (\$194,503,887):</u>	<u>Funds Expended (as of 10/26/18):</u>	<u>Projected Cost Over/(Under):</u>
○ PE \$ 14,082,810	\$ 14,060,762	\$ 0
○ RW \$ 54,392,666	\$ 37,780,135	\$ 0
○ CN \$ 126,028,411	<u>\$ 11,090,652</u>	\$ 0
	\$ 62,931,549	

Project Schedule:

Award	December 2017
Notice to Proceed	February 2018
Projected Completion	September 2021
Schedule Status	On-Schedule

Project Status:

- Utility relocations along Newtown Road
- Piles at I-264 EB Bridge B-601 over Newtown Road and Greenwich Road Box Culvert adjacent to Top Golf
- Ground and drainage improvements throughout project site



**Ground and Drainage Improvements I-264 E (Exit 15 B)**



**I-264 E Bridge B-601 over Newtown Road (looking west)**

**I-64 Southside Widening and High Rise Bridge - Phase I**

**Project Scope:**

From approximately the I-64/264/664 Interchange at Bowers Hill and extending to the I-64/464 Interchange in Chesapeake

- Widening from 4 to 6 lanes
- Constructing a new High Rise Bridge parallel to and to the South of the existing High Rise Bridge
- Addition of Shoulder Lanes between the Route 17 and I-464 interchanges

**Project Financial Summary:**

<u>Project Budget (\$524,613,765):</u>	<u>Funds Expended (as of 10/26/18):</u>	<u>Projected Cost Over/(Under):</u>
○ PE \$ 12,200,000	\$ 12,189,098	\$ 0
○ RW \$ 18,726,000	\$ 3,227,127	\$ 0
○ CN \$ 493,687,765	<u>\$ 80,011,085</u>	\$ 0
	\$ 95,427,310	

**Project Schedule:**

Award	October 2017
Notice to Proceed	November 2017
Project Completion	July 2021
Schedule Status	On-Schedule

**Project Status:**

- Conducting coordination meetings with permitting agencies, railroad companies, and other stakeholders
- Roadway and bridge plans by the DB are being reviewed by VDOT; 7 plan sets have been released for construction
- ROW plans are approved; Acquisition of 25 parcels is ongoing – 12 appraisals approved, 7 offers made, 2 acquired
- US Army Corps of Engineers and US Coast Guard permits scheduled to be obtained by middle of November
- Pile driving began in September between the east side of the Elizabeth River and Bainbridge Boulevard
- Shoulder and median pavement strengthening at east approach to existing High Rise Bridge began in October
- Preparations for construction of north abutment and north abutment MSE wall began in October



**Pile Driving Operations for East Approach Spans of New High Rise Bridge**



**HRTAC Program Development  
Monthly Executive Report  
November 2018**

Hampton Roads District  
7511 Burbage Drive  
Suffolk

**I-64 Hampton Roads Bridge-Tunnel Expansion**

**Refinement of Preferred Alternative**

Project Scope:

Preliminary work for the I-64 corridor from Settlers Landing Interchange to I-564, including the following activities for refinement of the Preferred Alternative and initial activities to develop the most appropriate procurement approach for expansion of the HRBT:

- Land survey, including photogrammetry, right-of-way verification, planimetric mapping, digital terrain modeling, and initial utility designation
- Wetlands survey/delineation to obtain preliminary Jurisdictional Determination
- Cultural resources/archaeological survey (land and marine)
- Hazardous materials investigations (land and marine)
- Geotechnical investigations (land and marine)
- Environmental permitting and agency coordination, including for in-channel geotechnical sampling
- Evaluation of disposal options for sediment dredge material and excavated boring material
- Procurement preparation, including industry outreach (Request for Information process, industry forum, meetings with potential proposers) and assessment of procurement- and delivery-method alternatives

Project Financial Summary:

<u>Project Budget (\$30,000,000):</u>	<u>Funds Expended (as of 10/26/18):</u>	<u>Projected Cost Over/(Under):</u>
○ PE \$30,000,000	\$ 20,464,412	\$ 0
○ RW \$ 0	\$ 0	\$ 0
○ CN \$ 0	\$ 0	\$ 0
	<u>\$ 20,464,412</u>	

Project Schedule:

Request for Qualifications (RFQ)	December 2017
Request for Proposals (RFP)	May 2018
Project Award	Early 2019
Project Completion	2025
Schedule Status	On-Schedule

Project Status:

- Project in procurement; contract award anticipated in early 2019

**Route 460/58/13 Connector**

Study Scope:

Study from approximately the I-664/U.S. Route 58 Interchange and extending to the Business U.S. Route 460 and the Suffolk Northern Bypass (U.S. Route 13/58/460) Interchange:

- Improve existing roadway to interstate standards and address roadway deficiencies
- Improve accessibility to/from the SPSA Regional Landfill
- Improve accessibility to/from the Hampton Roads Executive Airport

Study Financial Summary:

<u>Project Budget (\$5,000,000):</u>	<u>Funds Expended (as of 10/26/18):</u>	<u>Projected Cost Over/(Under):</u>
○ PE \$ 5,000,000	\$ 1,059,472	\$ 0
○ RW \$ 0	\$ 0	\$ 0
○ CN \$ 0	\$ 0	\$ 0
	\$ 1,059,472	

Study Schedule:

Begin NEPA Process	June 2017
Study Completion	June 2020

Study Status:

- Completing technical studies and compiling Environmental Assessment (EA) documentation for Federal Highway Administration review
- Study briefing scheduled for presentation to the TTAC on November 7, 2018 and HRTPO on November 15, 2018



Existing facility looking westbound from weigh station



Wetland south of eastbound lanes near Sondej Avenue



## I-64/I-264- Phase III

### Project Scope:

Study/design to improve the remaining I-64/I-264 movements

- Includes I-64 Eastbound (EB) movements to I-264
- Includes I-264 movements to I-64

### Project Financial Summary:

#### Project Budget (\$10,000,000):

- PE \$ 10,000,000
- RW \$ 0
- CN \$ 0

#### Funds Expended (as of 10/26/18):

\$ 426,560  
\$ 0  
0  
\$ 426,560

#### Projected Cost Over/(Under):

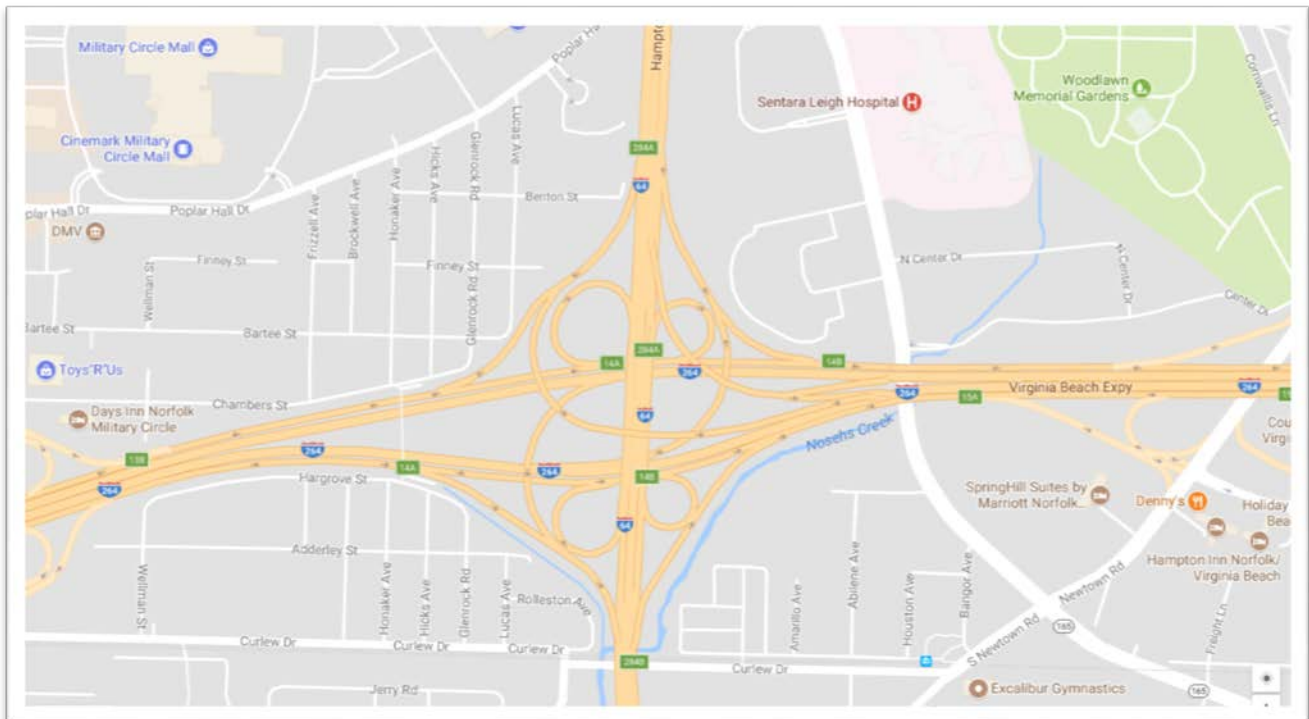
\$ 0  
\$ 0  
\$ 0

### Project Schedule:

Begin NEPA Process	October 2018
IMR Conditional Approval	August 2019
Complete NEPA	December 2019

### Project Status:

- Selected final three composite interchange alternatives to be carried forward into detailed analysis
- Continuing current and future traffic analysis
- Continuing IMR document development



**Bowers Hill Interchange**

Study Scope:

Develop NEPA document and supporting studies for improvements to the I-64/I-264/I-664 Interchange and the Route 58/Route 460 Interchange (Bowers Hill).

Study Financial Summary:

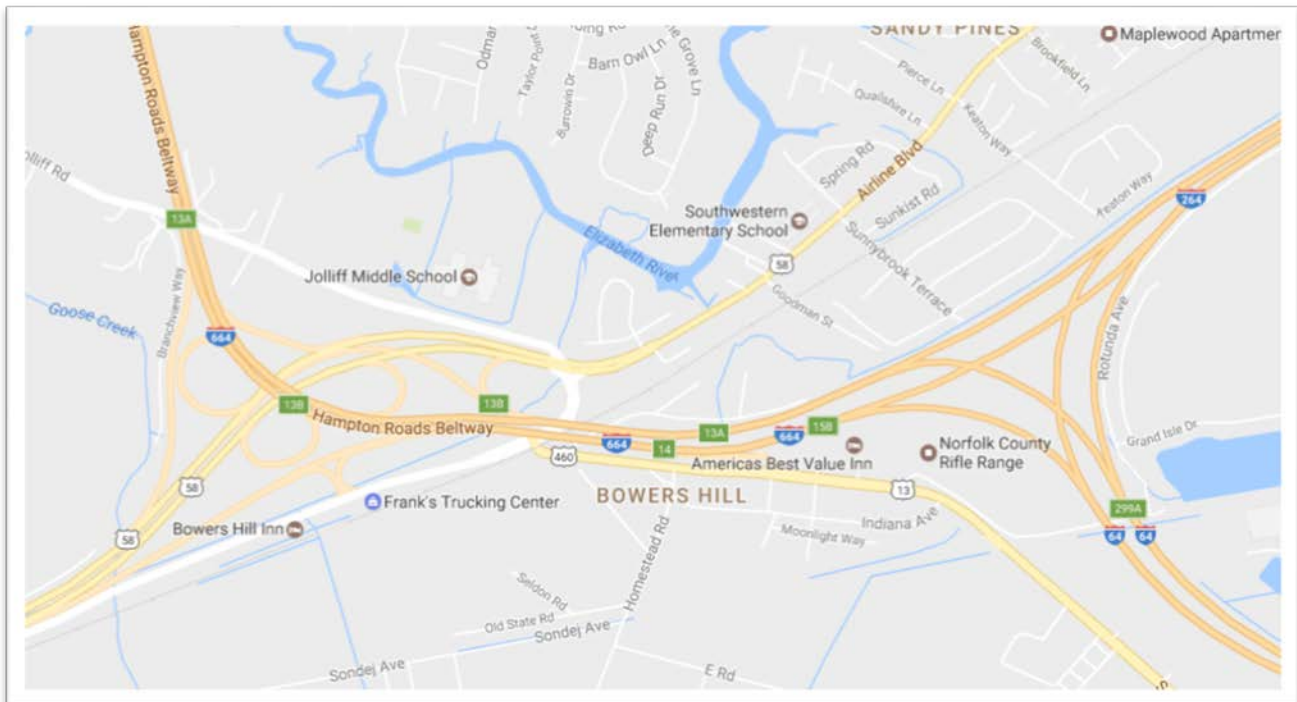
<u>Project Budget (\$4,000,000):</u>	<u>Funds Expended (as of 10/26/18):</u>	<u>Projected Cost Over/(Under):</u>
o PE \$4,000,000	\$ 696,901	\$ 0
o RW \$ 0	\$ 0	\$ 0
o CN \$ 0	\$ 0	\$ 0
	<u>\$ 696,901</u>	

Study Schedule:

Begin NEPA Process	January 2018
Completion	January 2020

Study Status:

- o IMR Chapters 1, 2 and 3 are being prepared for FHWA review
- o Concurrence received on alternatives to be retained for further analysis on October 10, 2018. Detailed traffic analysis required for the IMR is underway
- o Environmental evaluation is underway for the EA development
- o Location Public Hearing anticipated in May 2019



---

**Ft. Eustis Interchange**

Project Scope:

Replace the I-64 Ft Eustis Interchange to mitigate congestion and improve safety.

Project Financial Summary: TBD

Project Schedule: TBD

Project Status: TBD

**I-64 Southside Widening and High Rise Bridge- Phase II**

Project Scope:

From approximately the I-64/464 Interchange in Chesapeake extending to the I-64/264/664 Interchange at Bowers Hill

- Widening from 6 to 8 lanes
- Replacing the existing High Rise Bridge
- Rebuild the four Interchanges

Project Financial Summary: TBD

Project Schedule: TBD

Project Status: TBD