

I-64 Peninsula Widening- Segment I

Project Scope:

From 0.52 miles east of Yorktown Road/Rte 238 (Exit 247) to 1.55 miles west of Jefferson Ave/Rte 143 (Exit 255) (6.1 miles)

- o Additional 12' wide travel lanes and 12' wide shoulders within the existing median space
- o Replacement of the Industrial Park Drive bridges, and repair and widening of 4 bridges and 2 major culverts
- o Strengthened shoulder lane from Ft Eustis Blvd Interchange to Jefferson Avenue Interchange

Project Financial Summary:

<u>Project Budget (\$114,000,000):</u>	<u>Funds Expended (as of 12/28/18):</u>	<u>Projected Cost Over/(Under):</u>
o PE \$ 2,738,567	\$ 2,738,567	\$ 0
o RW \$ 32,494	\$ 32,494	\$ 0
o CN \$ 111,228,939	<u>\$ 108,835,731</u>	\$ 0
	\$ 111,606,792	

Project Schedule:

Notice To Proceed (NTP)	March 2015
Project Completion	December 2017
Schedule Status	Completed

Project Status:

- o Completion achieved on December 1, 2017



Project Site (Looking West from Denbigh Blvd.)

I-64 Peninsula Widening- Segment II

Project Scope:

From 1.05 miles west of Hummelsine Parkway/Marquis Center Pkwy/Rte 199 (Exit 242) to where the Segment I project ends at 0.54 miles east of Yorktown Road/Rte 238 (Exit 247) (7.1 miles)

- o Additional 12' wide travel lanes and 12' wide shoulders within the existing median space
- o Repair and widening of 9 bridges and 6 major culverts
- o Reconstruction of existing roadway

Project Financial Summary:

<u>Project Budget (\$175,832,897):</u>	<u>Funds Expended (as of 12/28/18):</u>	<u>Projected Cost Over/(Under):</u>
o PE \$ 6,000,000	\$ 2,610,848	\$ 0
o RW \$ 1,511,548	\$ 509,982	\$ 0
o CN \$ 168,321,349	<u>\$ 136,504,964</u>	\$ 0
	\$ 139,625,794	

Project Schedule:

Notice To Proceed	February 2016
Project Completion	May 2019
Schedule Status	On-Schedule

Project Status:

- o Continued Phase II pavement reconstruction throughout project Sections A through D
- o Continued with rehabilitation of existing bridge decks all bridges
- o Entire project is now in the Phase II traffic configuration
- o Installation of Noise Wall is underway



I-64 Noise wall construction

I-64 Peninsula Widening- Segment III

Project Scope:

From approximately 1.15 miles West of Rte 199/Lightfoot (Exit 234) to where the Segment II project ends at 1.05 miles west of Hummelsine Parkway/Marquis Center Pkwy /Rte 199 (Exit 242) (8.2 miles)

- o Additional 12' wide travel lanes and 12' wide shoulders within the existing median space
- o Replacement of the two Queen's Creek bridges, repair and widening of 4 bridges, 3 major culverts
- o Reconstruction of existing mainline roadway

Project Financial Summary:

<u>Project Budget (\$244,045,973):</u>	<u>Funds Expended (as of 12/28/18):</u>	<u>Projected Cost Over/(Under):</u>
o PE \$ 10,000,000	\$ 4,736,190	\$ 0
o RW \$ 12,000,000	\$ 41,184	\$ 0
o CN \$ 222,045,973	<u>\$ 33,561,517</u>	\$ 0
	\$ 38,338,891	

Project Schedule:

Notice To Proceed	January 2018
Project Completion	September 2021 (or June 2021 for early completion incentive)
Schedule Status	On-Schedule

Project Status:

- o Westbound traffic has been shifted to the outside lanes. Eastbound traffic switches are underway
- o Roadway plans, Lakeshead Drive Bridges, Colonial Pkwy Bridges and WB Queens Creek Bridge plans are approved
- o The USACE Joint Permit was approved on December 3, 2018. Waiting on additional approval from NOAA
- o Clearing and grubbing operations in the center median began in early December 2018
- o Installed temporary ramp diversion for westbound Route 143 traffic onto westbound I-64



Clearing and grubbing operations in center median of I-64

I-64/I-264- Phase I

Project Scope:

From the I-64 Twin Bridges to the I-264/Newtown Road Interchange

- Widening westbound I-64 by adding a second exit lane from Twin Bridges to the I-64/I-264 interchange
- Introducing a new two lane Collector-Distributor (C-D) roadway from I-64 to the Newtown Road interchange
- Constructing a new two-lane flyover ramp from westbound I-64 tying into the existing eastbound I-264 C-D road

Project Financial Summary:

<u>Project Budget (\$158,730,023):</u>	<u>Funds Expended (as of 12/28/18):</u>	<u>Projected Cost Over/(Under):</u>
○ PE \$ 10,135,307	\$ 10,135,307	\$ 0
○ RW \$ 11,571,063	\$ 20,313,080	\$ 8,742,017
○ CN \$ 137,023,653	<u>\$ 82,361,765</u>	\$ 0
	\$112,810,152	

Project Schedule:

Notice To Proceed	October 2016
Project Completion	October 2019
Schedule Status	On-Schedule

Project Status:

- Completed Culvert 8-34 at I-264 E Exit 15A
- Preparing for Phase 3 Weekend Lane Shift
- Erecting overhead signs on bridges



Overhead Signs Bridge B-602



South Newtown Rd Loop to I-264 EB. Culvert 8-34 Inlet (left)

I-64/I-264- Phase II

Project Scope:

From the I-264/Newtown Road Interchange to the I-264/Witchduck Road Interchange

- Extends the new C-D roadway from the Newtown Road interchange to the Witchduck Road interchange
- Reconfigure the Newtown Road and Witchduck Road interchange ramps south of I-264
- Constructing a new overpass that connects Greenwich Road south side of I-264 and Cleveland north of I-264

Project Financial Summary:

<u>Project Budget (\$194,503,887):</u>	<u>Funds Expended (as of 12/28/18):</u>	<u>Projected Cost Over/(Under):</u>
○ PE \$ 14,082,810	\$ 14,063,381	\$ 0
○ RW \$ 54,392,666	\$ 40,176,528	\$ 0
○ CN \$ 126,028,411	<u>\$ 14,375,958</u>	\$ 0
	\$ 68,615,867	

Project Schedule:

Award	December 2017
Notice to Proceed	February 2018
Projected Completion	September 2021
Schedule Status	On-Schedule

Project Status:

- Completed Southbound utility relocations along Newtown Road
- Driving piles at I-264 EB Bridge B-601 over Newtown Road
- Extending Box Culvert I-264 EB



Ground Improvement Piles I-264 Over Newtown Road



Box Culvert Extension I-264 EB just east of Top Golf

I-64 Southside Widening and High Rise Bridge - Phase I

Project Scope:

From approximately the I-64/264/664 Interchange at Bowers Hill and extending to the I-64/464 Interchange in Chesapeake

- Widening from 4 to 6 lanes
- Construct a new High Rise Bridge (HRB) parallel to and to the South of the existing High Rise Bridge
- Addition of Shoulder Lanes between the Route 17 and I-464 interchanges

Project Financial Summary:

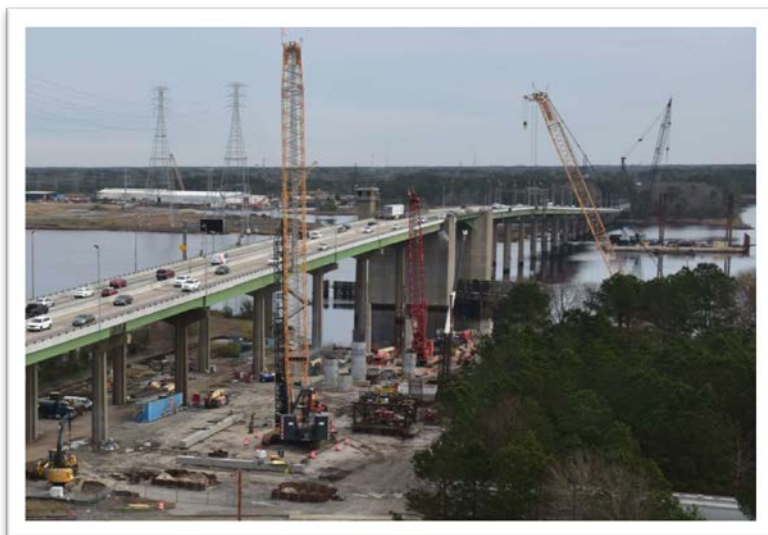
<u>Project Budget (\$524,613,765):</u>	<u>Funds Expended (as of 12/28/18):</u>	<u>Projected Cost Over/(Under):</u>
○ PE \$ 12,200,000	\$ 12,189,098	\$ 0
○ RW \$ 18,726,000	\$ 3,262,063	\$ 0
○ CN \$ 493,687,765	<u>\$ 93,550,615</u>	\$ 0
	\$109,001,776	

Project Schedule:

Award	October 2017
Notice to Proceed	November 2017
Project Completion	July 2021
Schedule Status	On-Schedule

Project Status:

- Roadway and bridge plans are being reviewed by VDOT; 12 plan sets have been released for construction
- ROW plans are approved; Acquisition of 25 parcels is ongoing – 16 appraisals approved, 16 offers made, 2 acquired
- US Army Corps of Engineers permit obtained on 11/9/18; US Coast Guard permit obtained on 12/6/18
- HRB pier construction (piles, footings, columns) underway on Piers 10, 13, 19, 20, 21 & 22. Others to start this month
- Fender system construction to start this month
- Shoulder and median pavement strengthening at east approach to existing High Rise Bridge underway
- Construction of both HRB abutments and abutment MSE walls underway
- Construction of I-64 Bridge Widening over Military Highway and Yadkin Road along with associated roadway work to start this month



Pile Driving Operations for East Approach Spans of New High Rise Bridge

I-64 Hampton Roads Bridge-Tunnel Expansion

Refinement of Preferred Alternative

Project Scope:

Preliminary work for the I-64 corridor from Settlers Landing Interchange to I-564, including the following activities for refinement of the Preferred Alternative and initial activities to develop the most appropriate procurement approach for expansion of the HRBT:

- Land survey, including photogrammetry, right-of-way verification, planimetric mapping, digital terrain modeling, and initial utility designation
- Wetlands survey/delineation to obtain preliminary Jurisdictional Determination
- Cultural resources/archaeological survey (land and marine)
- Hazardous materials investigations (land and marine)
- Geotechnical investigations (land and marine)
- Environmental permitting and agency coordination, including for in-channel geotechnical sampling
- Evaluation of disposal options for sediment dredge material and excavated boring material
- Procurement preparation, including industry outreach (Request for Information process, industry forum, meetings with potential proposers) and assessment of procurement- and delivery-method alternatives

Project Financial Summary:

<u>Project Budget (\$30,000,000):</u>	<u>Funds Expended (as of 12/28/18):</u>	<u>Projected Cost Over/(Under):</u>
○ PE \$30,000,000	\$ 23,357,561	\$ 0
○ RW \$ 0	\$ 0	\$ 0
○ CN \$ 0	\$ 0	\$ 0
	\$ 23,357,561	

Project Schedule:

Request for Qualifications (RFQ)	December 2017
Request for Proposals (RFP)	May 2018
Project Award	Early 2019
Project Completion	2025
Schedule Status	On-Schedule

Project Status:

- Project in procurement; contract award anticipated in early 2019

Route 460/58/13 Connector

Study Scope:

Study from approximately the I-664/U.S. Route 58 Interchange and extending to the Business U.S. Route 460 and the Suffolk Northern Bypass (U.S. Route 13/58/460) Interchange:

- Improve existing roadway to interstate standards and address roadway deficiencies
- Improve accessibility to/from the SPSA Regional Landfill
- Improve accessibility to/from the Hampton Roads Executive Airport

Study Financial Summary:

<u>Project Budget (\$5,000,000):</u>	<u>Funds Expended (as of 12/28/18):</u>	<u>Projected Cost Over/(Under):</u>
○ PE \$ 5,000,000	\$ 1,080,792	\$ 0
○ RW \$ 0	\$ 0	\$ 0
○ CN \$ 0	\$ 0	\$ 0
	<u>\$ 1,080,792</u>	

Study Schedule:

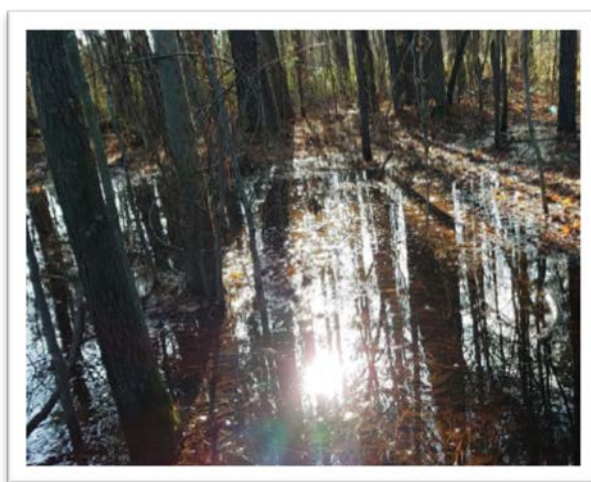
Begin NEPA Process	June 2017
Study Completion	June 2020

Study Status:

- TTAC and HRTPO voted to stop work on the study
- Final invoice has been submitted and is being processed by VDOT's Fiscal Division
- Project files have been submitted to VDOT



Existing facility looking westbound from weigh station



Wetland south of eastbound lanes near Sondej Avenue

I-64/I-264- Phase III

Project Scope:

Study/design to improve the remaining I-64/I-264 movements

- Includes I-64 Eastbound (EB) movements to I-264
- Includes I-264 movements to I-64

Project Financial Summary:

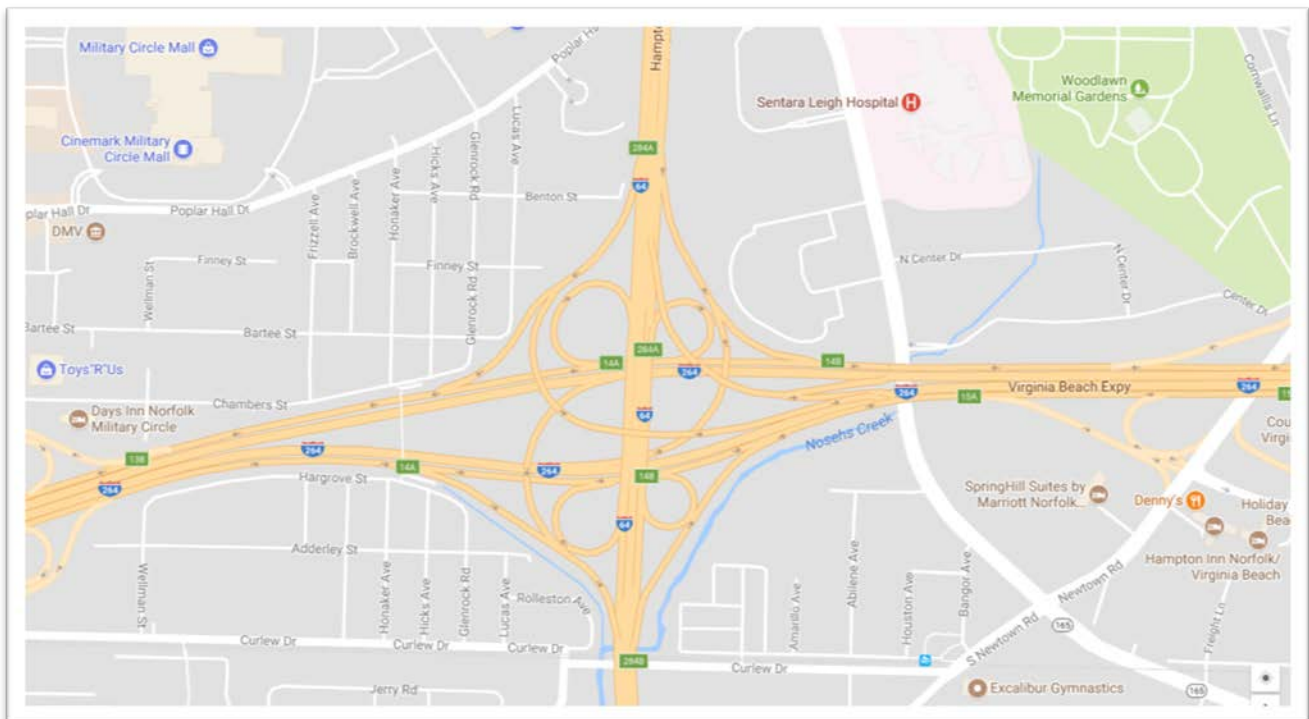
<u>Project Budget (\$10,000,000):</u>	<u>Funds Expended (as of 12/28/18):</u>	<u>Projected Cost Over/(Under):</u>
○ PE \$ 10,000,000	\$ 474,769	\$ 0
○ RW \$ 0	\$ 0	\$ 0
○ CN \$ 0	<u>\$ 0</u>	\$ 0
	\$ 474,769	

Project Schedule:

Begin NEPA Process	October 2018
IMR Conditional Approval	August 2019
Complete NEPA	December 2019

Project Status:

- Projected 2044 traffic volumes approved by VDOT
- VISSIM and Synchro analyses for future build and no-build conditions are underway
- Final draft IMR chapters are being revised to address VDOT's review comments
- Drainage and SWM needs assessment and coordination with municipalities are underway
- Cost estimate development for three selected alternatives is underway



Bowers Hill Interchange

Study Scope:

Develop NEPA document and supporting studies for improvements to the I-64/I-264/I-664 Interchange and the Route 58/Route 460 Interchange (Bowers Hill).

Study Financial Summary:

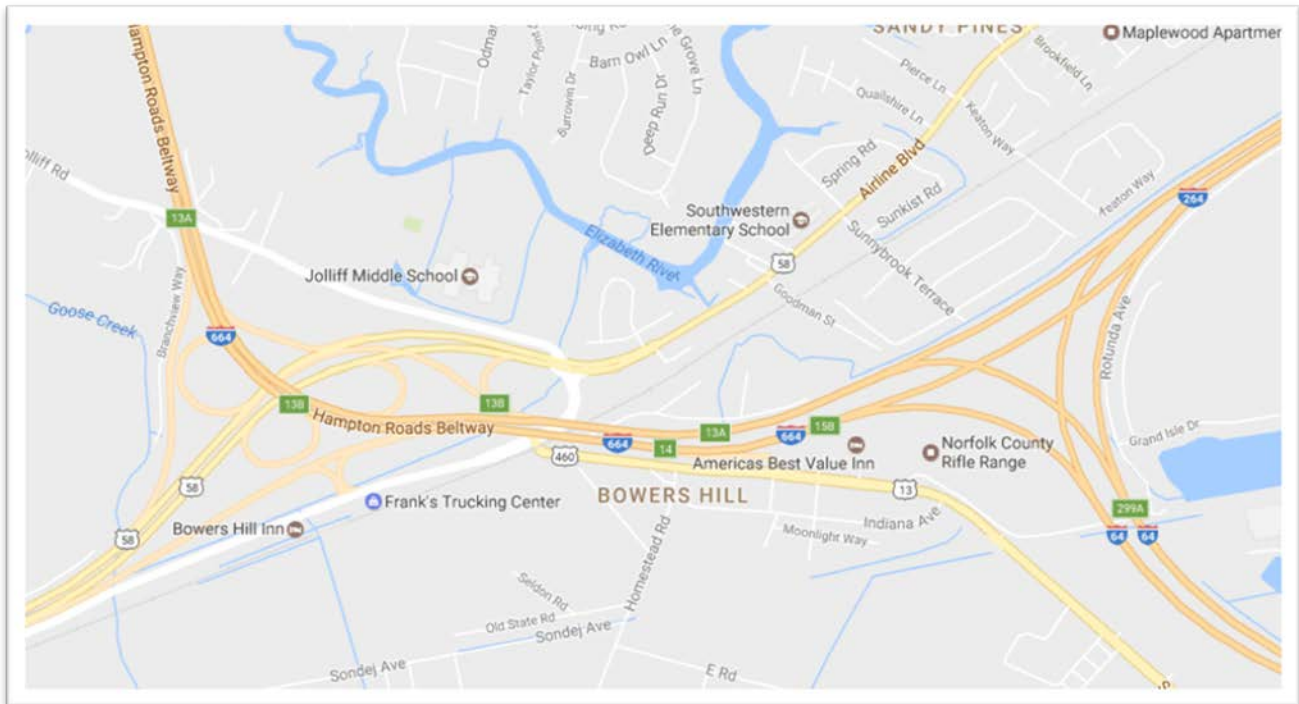
<u>Project Budget (\$4,000,000):</u>	<u>Funds Expended (as of 12/28/18):</u>	<u>Projected Cost Over/(Under):</u>
o PE \$4,000,000	\$ 847,565	\$ 0
o RW \$ 0	\$ 0	\$ 0
o CN \$ 0	\$ 0	\$ 0
	\$ 847,565	

Study Schedule:

Begin NEPA Process	January 2018
Completion	January 2020

Study Status:

- o IMR Chapters 4 and 5 submitted to FHWA by 1/4/19
- o Draft EA to be submitted to VDOT by mid- February for internal review
- o Draft technical documents are being revised
- o Select draft technical documents to be submitted to the EPA and USACE by mid-January for review
- o Location Public Hearing anticipated in May 2019



Ft. Eustis Interchange

Project Scope:

Replace the I-64 Ft Eustis Interchange to mitigate congestion and improve safety.

Project Financial Summary: TBD

Project Schedule: TBD

Project Status: TBD

I-64 Southside Widening and High Rise Bridge- Phase II

Project Scope:

From approximately the I-64/464 Interchange in Chesapeake extending to the I-64/264/664 Interchange at Bowers Hill

- Widening from 6 to 8 lanes
- Replacing the existing High Rise Bridge
- Rebuild the four Interchanges

Project Financial Summary: TBD

Project Schedule: TBD

Project Status: TBD