

**I-64 Peninsula Widening- Segment I**

**Project Scope:**

From 0.52 miles east of Yorktown Road/Rte 238 (Exit 247) to 1.55 miles west of Jefferson Ave/Rte 143 (Exit 255) (6.1 miles)

- o Additional 12' wide travel lanes and 12' wide shoulders within the existing median space
- o Replacement of the Industrial Park Drive bridges, and repair and widening of 4 bridges and 2 major culverts
- o Strengthened shoulder lane from Ft Eustis Blvd Interchange to Jefferson Avenue Interchange

**Project Financial Summary:**

<u>Project Budget (\$101,544,502):</u>	<u>Funds Expended (as of 11/30/18):</u>	<u>Projected Cost Over/(Under):</u>
o PE \$ 2,738,567	\$ 2,738,567	\$ 0
o RW \$ 32,494	\$ 32,494	\$ 0
o CN \$ 98,773,441	<u>\$ 98,773,666</u>	\$ 0
	\$ 101,544,727	

**Project Schedule:**

Notice To Proceed (NTP)	March 2015
Project Completion	December 2017
Schedule Status	Completed

**Project Status:**

- o Completion achieved on December 1, 2017



**Project Site (Looking West from Denbigh Blvd.)**

**I-64 Peninsula Widening- Segment II**

Project Scope:

From 1.05 miles west of Hummelsine Parkway/Marquis Center Pkwy/Rte 199 (Exit 242) to where the Segment I project ends at 0.54 miles east of Yorktown Road/Rte 238 (Exit 247) (7.1 miles)

- o Additional 12' wide travel lanes and 12' wide shoulders within the existing median space
- o Repair and widening of 9 bridges and 6 major culverts
- o Reconstruction of existing roadway

Project Financial Summary:

<u>Project Budget (\$175,832,897):</u>	<u>Funds Expended (as of 11/30/18):</u>	<u>Projected Cost Over/(Under):</u>
o PE \$ 6,000,000	\$ 2,594,674	\$ 0
o RW \$ 1,511,548	\$ 509,913	\$ 0
o CN \$ 168,321,349	<u>\$ 132,687,649</u>	\$ 0
	\$ 135,792,236	

Project Schedule:

Notice To Proceed	February 2016
Project Completion	May 2019
Schedule Status	On-Schedule

Project Status:

- o Continued Phase II pavement reconstruction throughout project Sections A through D
- o Continued with rehabilitation of existing bridge decks all bridges
- o Entire project is now in the Phase II traffic configuration
- o Installation of Noise Wall is underway



**I-64 construction looking east from the Rt. 199 overpass**

**I-64 Peninsula Widening- Segment III**

Project Scope:

From approximately 1.15 miles West of Rte 199/Lightfoot (Exit 234) to where the Segment II project ends at 1.05 miles west of Hummelsine Parkway/Marquis Center Pkwy /Rte 199 (Exit 242) (8.2 miles)

- o Additional 12' wide travel lanes and 12' wide shoulders within the existing median space
- o Replacement of the two Queen's Creek bridges, repair and widening of 4 bridges, 3 major culverts
- o Reconstruction of existing mainline roadway

Project Financial Summary:

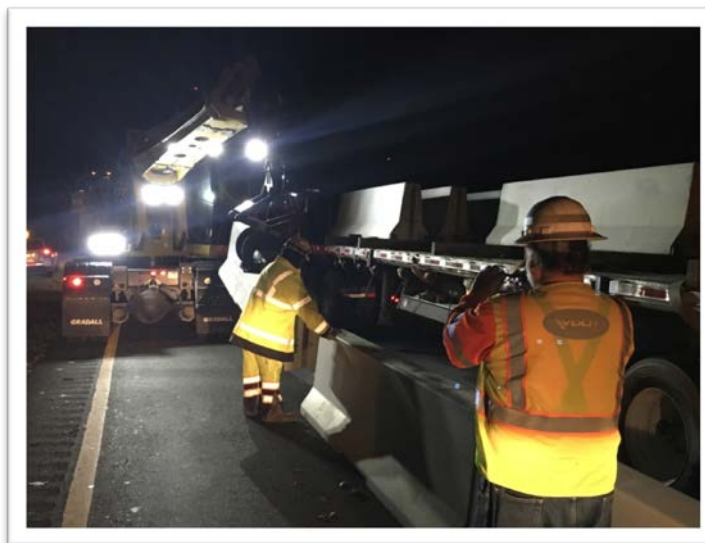
<u>Project Budget (\$244,045,973):</u>	<u>Funds Expended (as of 11/30/18):</u>	<u>Projected Cost Over/(Under):</u>
o PE \$ 10,000,000	\$ 4,688,431	\$ 0
o RW \$ 12,000,000	\$ 39,323	\$ 0
o CN \$ 222,045,973	<u>\$ 31,395,341</u>	\$ 0
	\$ 36,123,095	

Project Schedule:

Notice To Proceed	January 2018
Project Completion	September 2021 (or June 2021 for early completion incentive)
Schedule Status	On-Schedule

Project Status:

- o Outside shoulder strengthening has been completed
- o Westbound traffic has been shifted to the outside lanes. Eastbound traffic switches are underway
- o 100% Roadway Design Plans have been approved. Notice to Commence Construction issued in late November 2018
- o The USACE Joint Permit was approved on December 3, 2018
- o Clearing and grubbing operations in the center median to begin in early December 2018



**Installation of temporary concrete barrier service on westbound I-64**

**I-64/I-264- Phase I**

Project Scope:

From the I-64 Twin Bridges to the I-264/Newtown Road Interchange

- Widening westbound I-64 by adding a second exit lane from Twin Bridges to the I-64/I-264 interchange
- Introducing a new two lane Collector-Distributor (C-D) roadway from I-64 to the Newtown Road interchange
- Constructing a new two-lane flyover ramp from westbound I-64 tying into the existing eastbound I-264 C-D road

Project Financial Summary:

<u>Project Budget (\$158,730,023):</u>	<u>Funds Expended (as of 11/30/18):</u>	<u>Projected Cost Over/(Under):</u>
○ PE \$ 10,135,307	\$ 10,135,307	\$ 0
○ RW \$ 11,571,063	\$ 20,292,505	\$ 8,721,442
○ CN \$ 137,023,653	<u>\$ 81,962,918</u>	\$ 0
	\$112,390,730	

Project Schedule:

Notice To Proceed	October 2016
Project Completion	October 2019
Schedule Status	On-Schedule

Project Status:

- Completed Bridge B-603 bridge decks
- Culvert 8-34 at I-264 E Exit 15A nearing completion
- Continuing widening of I-64 W between twin bridges and Curlew Avenue



**Setting last remaining sections of Culvert 8-34**



**Recently completed Bridge B-603 deck sections**

**I-64/I-264- Phase II**

Project Scope:

From the I-264/Newtown Road Interchange to the I-264/Witchduck Road Interchange

- o Extends the new C-D roadway from the Newtown Road interchange to the Witchduck Road interchange
- o Reconfigure the Newtown Road and Witchduck Road interchange ramps south of I-264
- o Constructing a new overpass that connects Greenwich Road south side of I-264 and Cleveland north of I-264

Project Financial Summary:

<u>Project Budget (\$194,503,887):</u>	<u>Funds Expended (as of 11/30/18):</u>	<u>Projected Cost Over/(Under):</u>
o PE \$ 14,082,810	\$ 14,062,946	\$ 0
o RW \$ 54,392,666	\$ 37,922,870	\$ 0
o CN \$ 126,028,411	<u>\$ 11,923,216</u>	\$ 0
	\$ 63,909,032	

Project Schedule:

Award	December 2017
Notice to Proceed	February 2018
Projected Completion	September 2021
Schedule Status	On-Schedule

Project Status:

- o Performing utility relocations along Newtown Road
- o Driving piles at I-264 EB Bridge B-601 over Newtown Road and Greenwich Road Box Culvert adjacent to Top Golf
- o Performing ground and drainage improvements throughout project site



**Pile Driving Bridge B-601 with Support of Excavation Wall (right, looking west)**

**I-64 Southside Widening and High Rise Bridge - Phase I**

Project Scope:

From approximately the I-64/264/664 Interchange at Bowers Hill and extending to the I-64/464 Interchange in Chesapeake

- o Widening from 4 to 6 lanes
- o Constructing a new High Rise Bridge parallel to and to the South of the existing High Rise Bridge
- o Addition of Shoulder Lanes between the Route 17 and I-464 interchanges

Project Financial Summary:

<u>Project Budget (\$524,613,765):</u>	<u>Funds Expended (as of 11/30/18):</u>	<u>Projected Cost Over/(Under):</u>
o PE \$ 12,200,000	\$ 12,190,808	\$ 0
o RW \$ 18,726,000	\$ 3,240,296	\$ 0
o CN \$ 493,687,765	<u>\$ 85,439,166</u>	\$ 0
	\$100,870,270	

Project Schedule:

Award	October 2017
Notice to Proceed	November 2017
Project Completion	July 2021
Schedule Status	On-Schedule

Project Status:

- o Conducting coordination meetings with permitting agencies, railroad companies, and other stakeholders
- o Roadway and bridge plans are being reviewed by VDOT; 12 plan sets have been released for construction
- o ROW plans are approved; Acquisition of 25 parcels is ongoing – 15 appraisals approved, 11 offers made, 2 acquired
- o US Army Corps of Engineers obtained on 11/9/18; US Coast Guard permit scheduled to be obtained early December
- o Pile driving began in September between the east side of the Elizabeth River and Bainbridge Boulevard
- o Shoulder and median pavement strengthening at east approach to existing High Rise Bridge underway
- o Preparations for construction of north abutment and north abutment MSE wall underway
- o Construction of Military Highway and Yadkin Road Bridges along with associated roadway work to start this month



**Pile Driving Operations for East Approach Spans of New High Rise Bridge**

**I-64 Hampton Roads Bridge-Tunnel Expansion**

**Refinement of Preferred Alternative**

Project Scope:

Preliminary work for the I-64 corridor from Settlers Landing Interchange to I-564, including the following activities for refinement of the Preferred Alternative and initial activities to develop the most appropriate procurement approach for expansion of the HRBT:

- o Land survey, including photogrammetry, right-of-way verification, planimetric mapping, digital terrain modeling, and initial utility designation
- o Wetlands survey/delineation to obtain preliminary Jurisdictional Determination
- o Cultural resources/archaeological survey (land and marine)
- o Hazardous materials investigations (land and marine)
- o Geotechnical investigations (land and marine)
- o Environmental permitting and agency coordination, including for in-channel geotechnical sampling
- o Evaluation of disposal options for sediment dredge material and excavated boring material
- o Procurement preparation, including industry outreach (Request for Information process, industry forum, meetings with potential proposers) and assessment of procurement- and delivery-method alternatives

Project Financial Summary:

<u>Project Budget (\$30,000,000):</u>	<u>Funds Expended (as of 11/30/18):</u>	<u>Projected Cost Over/(Under):</u>
o PE \$30,000,000	\$ 22,601,627	\$ 0
o RW \$ 0	\$ 0	\$ 0
o CN \$ 0	\$ 0	\$ 0
	\$ 22,601,627	

Project Schedule:

Request for Qualifications (RFQ)	December 2017
Request for Proposals (RFP)	May 2018
Project Award	Early 2019
Project Completion	2025
Schedule Status	On-Schedule

Project Status:

- o Project in procurement; contract award anticipated in early 2019

**Route 460/58/13 Connector**

Study Scope:

Study from approximately the I-664/U.S. Route 58 Interchange and extending to the Business U.S. Route 460 and the Suffolk Northern Bypass (U.S. Route 13/58/460) Interchange:

- Improve existing roadway to interstate standards and address roadway deficiencies
- Improve accessibility to/from the SPSA Regional Landfill
- Improve accessibility to/from the Hampton Roads Executive Airport

Study Financial Summary:

<u>Project Budget (\$5,000,000):</u>	<u>Funds Expended (as of 11/30/18):</u>	<u>Projected Cost Over/(Under):</u>
○ PE \$ 5,000,000	\$ 1,078,157	\$ 0
○ RW \$ 0	\$ 0	\$ 0
○ CN \$ 0	\$ 0	\$ 0
	<u>\$ 1,078,157</u>	

Study Schedule:

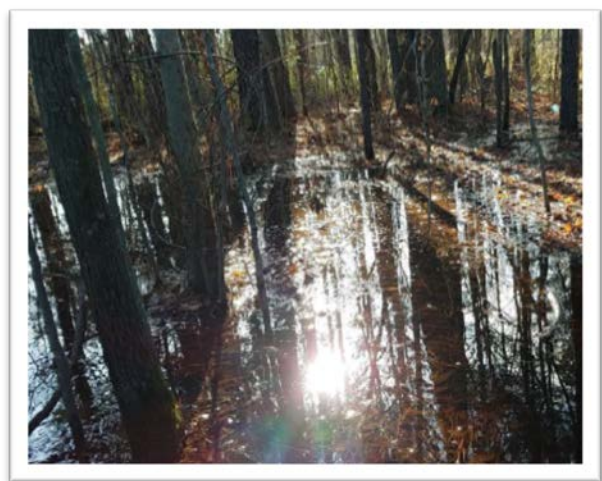
Begin NEPA Process	June 2017
Study Completion	N/A

Study Status:

- TTAC and HRTPO voted to stop work on the study
- Final invoice and study files to be submitted to VDOT in December



**Existing facility looking westbound from weigh station**



**Wetland south of eastbound lanes near Sondej Avenue**



## I-64/I-264- Phase III

### Project Scope:

Study/design to improve the remaining I-64/I-264 movements

- Includes I-64 Eastbound (EB) movements to I-264
- Includes I-264 movements to I-64

### Project Financial Summary:

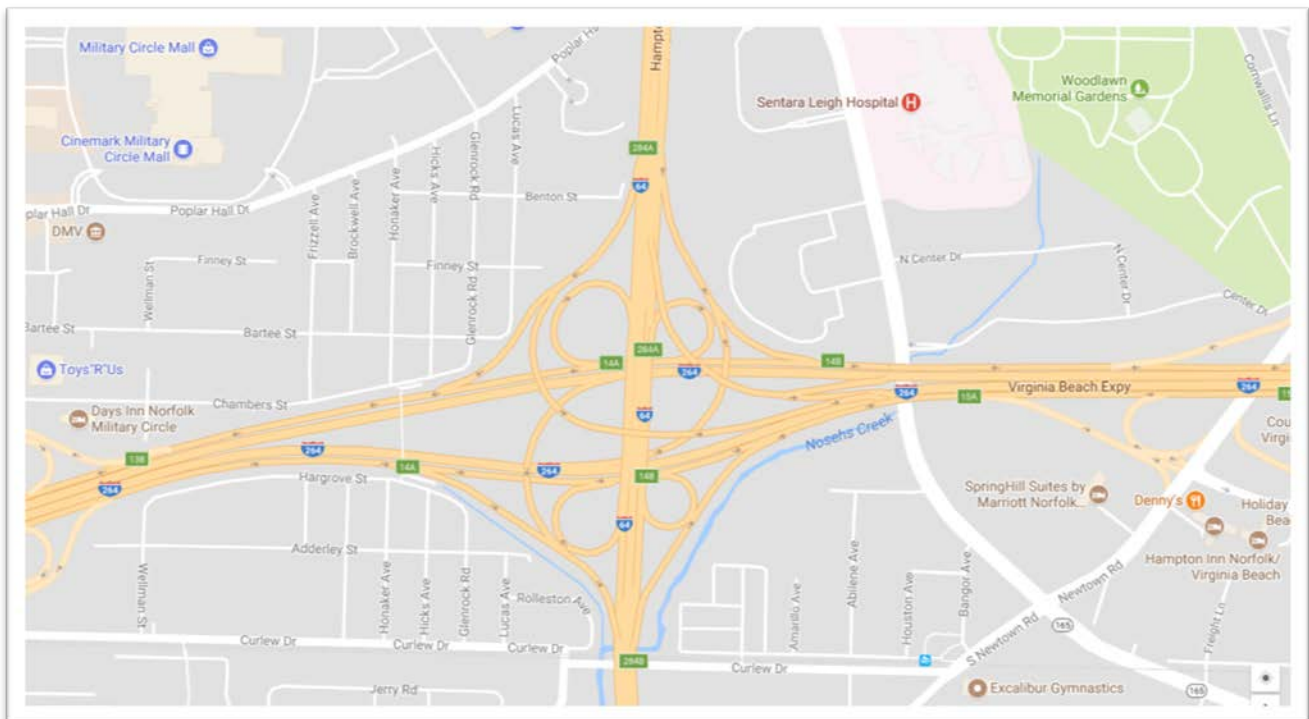
<u>Project Budget (\$10,000,000):</u>	<u>Funds Expended (as of 11/30/18):</u>	<u>Projected Cost Over/(Under):</u>
○ PE \$ 10,000,000	\$ 455,378	\$ 0
○ RW \$ 0	\$ 0	\$ 0
○ CN \$ 0	<u>\$ 0</u>	\$ 0
	\$ 455,378	

### Project Schedule:

Begin NEPA Process	October 2018
IMR Conditional Approval	August 2019
Complete NEPA	December 2019

### Project Status:

- Final three composite interchange alternatives selected to be carried forward into detailed analysis
- Geometric refinements underway for the selected interchange alternatives
- FHWA’s concurrence obtained on the forecasting methodology to develop future traffic volumes
- VISSIM analysis for future build and no-build conditions underway
- IMR document development underway



**Bowers Hill Interchange**

Study Scope:

Develop NEPA document and supporting studies for improvements to the I-64/I-264/I-664 Interchange and the Route 58/Route 460 Interchange (Bowers Hill).

Study Financial Summary:

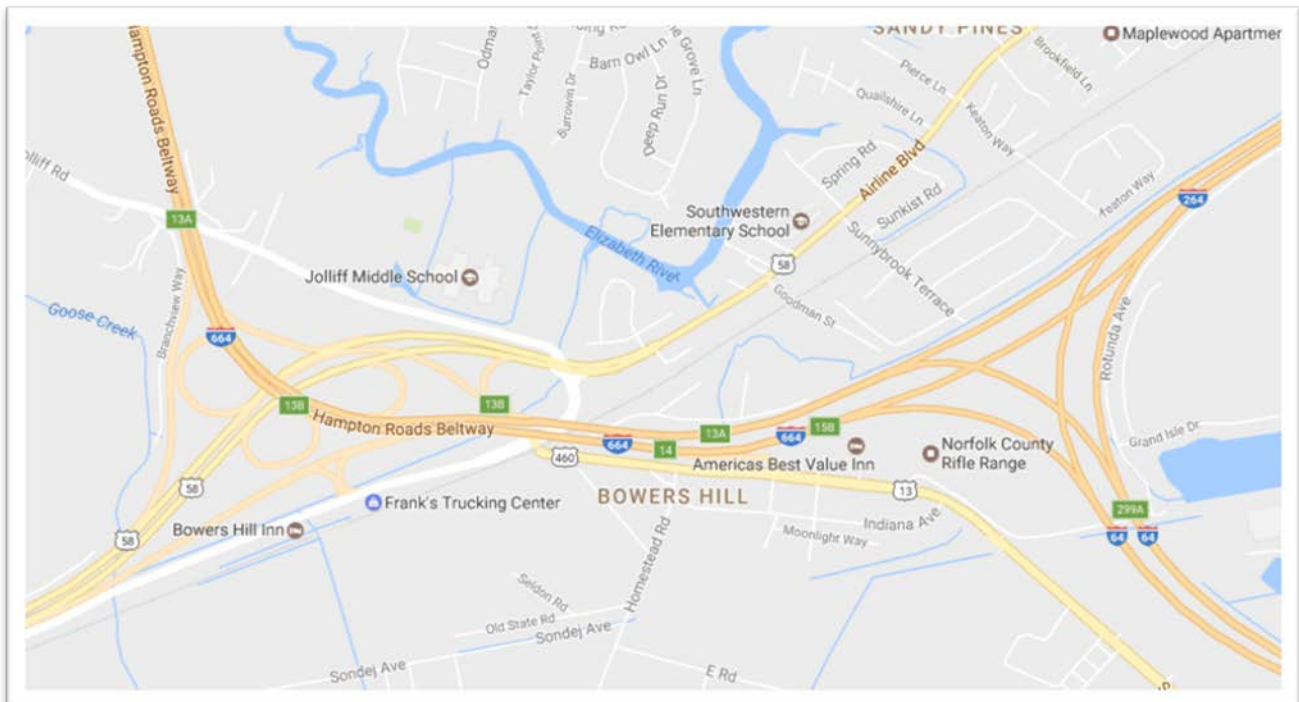
<u>Project Budget (\$4,000,000):</u>	<u>Funds Expended (as of 11/30/18):</u>	<u>Projected Cost Over/(Under):</u>
o PE \$4,000,000	\$ 755,315	\$ 0
o RW \$ 0	\$ 0	\$ 0
o CN \$ 0	\$ 0	\$ 0
	\$ 755,315	

Study Schedule:

Begin NEPA Process	January 2018
Completion	January 2020

Study Status:

- o IMR Chapters 1, 2 and 3 are under FHWA review
- o IMR Chapters 4 and 5 are being revised for FHWA submittal
- o Environmental evaluation is underway for the EA development
- o Draft technical documents are under VDOT review
- o Preliminary Jurisdictional Determination request to be submitted to the USACE by mid-December for the two alternatives retained for further analysis
- o Location Public Hearing anticipated in May 2019



---

**Ft. Eustis Interchange**

Project Scope:

Replace the I-64 Ft Eustis Interchange to mitigate congestion and improve safety.

Project Financial Summary: TBD

Project Schedule: TBD

Project Status: TBD

**I-64 Southside Widening and High Rise Bridge- Phase II**

Project Scope:

From approximately the I-64/464 Interchange in Chesapeake extending to the I-64/264/664 Interchange at Bowers Hill

- Widening from 6 to 8 lanes
- Replacing the existing High Rise Bridge
- Rebuild the four Interchanges

Project Financial Summary: TBD

Project Schedule: TBD

Project Status: TBD